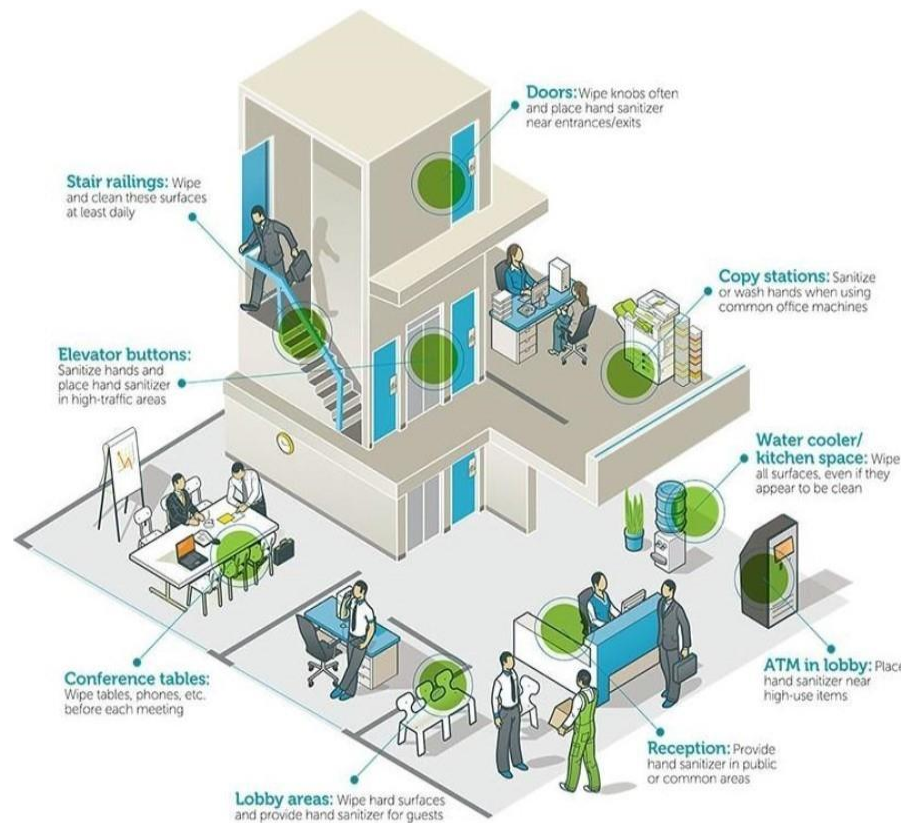


## Touchpoint Areas to Disinfect in preventing the spread of Coronavirus COVID-19 and other Viruses in a typical office environment

- **Restrooms:** Cleaned and disinfected includes doors, handrails, dispensers, mirrors, sinks, fixtures, toilet/urinal, floors, partitions etc.
- **Office Areas:** Disinfection of uncluttered surfaces, floors sanitized/disinfected and high touch areas
- **Break Rooms/Kitchens:** Countertops, tables microwave handles, refrigerator handles, chairs and all other high touch point areas
- **Public areas, conference rooms, etc.:** Clean and disinfect door handles, phones, counter tops, railings, light switch, fountains, elevator and other areas considered **HIGH TOUCH**



**A&I Clean Level 1:** Preventative in nature (No known Corona COVID-19 on property) Application of disinfectant/sanitizer sprayed on all designated surfaces from a height of six feet down. Designated surfaces generally include horizontal and vertical surfaces and contents such as flooring, desks, and walls. The amount of contents at this price point is generally medium. All A&I Employees will wear appropriate Personal Protective Equipment PPE listed on following page.

**A&I Clean Level 2:** Preventative in nature (No known Corona COVID-19 exposure) Application of disinfectant/sanitizer sprayed on all surfaces from six feet down and non-porous contents. Additionally, disinfection wipe down of common touch points with EPA and CDC approved products. The amount of contents at this price point is generally medium. All A&I Employees will wear appropriate Personal Protective Equipment PPE listed on following page.

**A&I Clean Level 3:** Confirmed Corona COVID-19 exposure to property. Application of disinfectant/sanitizer is sprayed on all surfaces. A disinfection wipe down of common touch points. All surfaces will be cleaned including all horizontal & vertical with a vapor delivery system 4-24 hours to control bacteria, other micro organisms and films and promote deodorization. The use of High Efficiency Particulate Air Filtration Devices (HEPA) will be used onsite to remove nano particles from the air. This equipment is proven effective in capturing particles the same size as the Corona Virus. All A&I Employees will wear appropriate Personal Protective Equipment PPE listed on following page.



### **Site Visit:**

Prior to beginning a job, it is most ideal for a designated employee of A&I to visit or the property prior to quotes being finalized. There are building sizes and configurations that may require additional cost for services. Examples could be building high ceilings or a large density of contents.

In addition, a site visit allows A&I time for a quick assessment to comply with NIOSH or OSHA standards.

### **EPA Approved Products:**

Below are products A&I uses for disinfection for the cause of COVID-19 scientifically known as SARS-CoV-2 more commonly referred to as Corona Virus.

- Bioesque (Thymox) EPA List N Reg. 87742-1
- Mediclean Germicidal Cleaner Concentrate Lemon EPA Reg 70385-6
- Anasphere Plus EPA Reg. No 61178-1-72786



### **PERSONAL PROTECTIVE EQUIPMENT (PPE)**

A&I will require employees to wear proper PPE for preventive & coronavirus cleaning jobs

Examples Include but are not limited to

Tyvek Suit

Rubber Gloves

Rubber Boots (optional for preventive)

Full Face Respirator